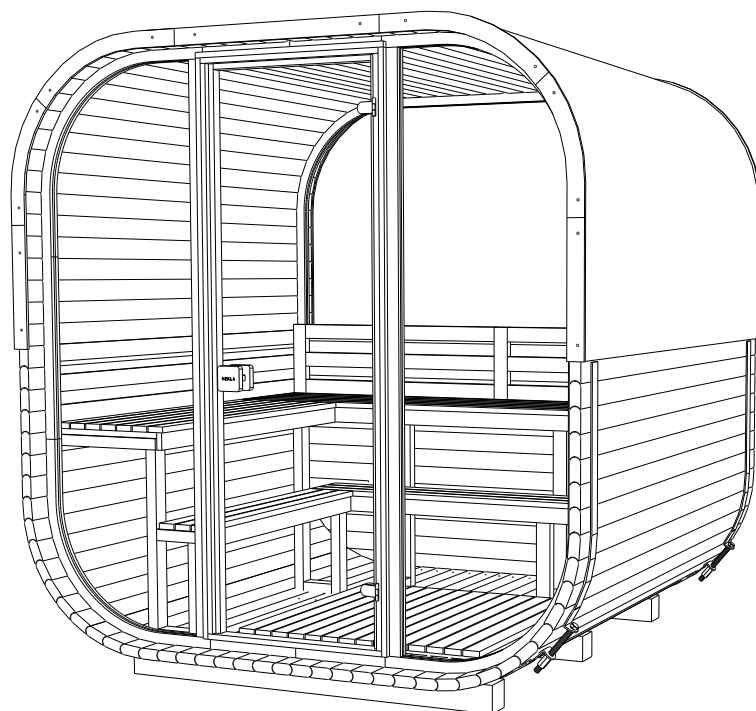
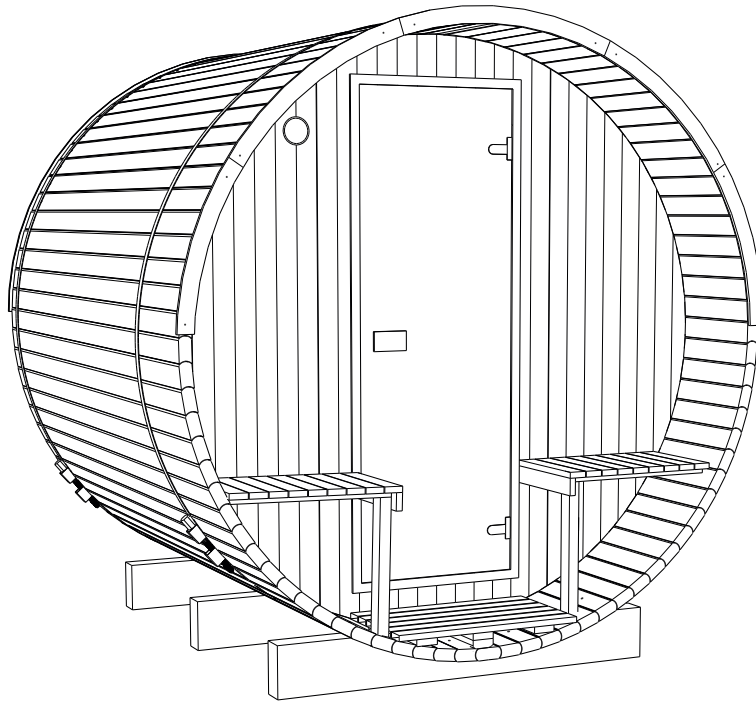


HEKLA

SHINGLES INSTALATION GUIDE ASSEMBLY INSTRUCTION



SHINGLES INSTALATION GUIDE

FIG 1



FIG 2



FIG 2



Take droplet and instal it aprox. in same level as the panoramic window which is mid point of the sauna (refer to FIG 1 and 2).

FIG 3



FIG 4



Using hammer or nail gun nail droplet to the staves of the sauna (refer to FIG 3 and 4).

FIG 5



FIG 6



To apply underlay, underlay is cut to the size for each sauna, once droplet is installed next step is to measure approx. 17cm from droplet upwards (refer to FIG 5). Remove white tape cover and using adhesive side of the underlayer glue it on the sauna, underlays goes horizontally (refer to FIG 6).

FIG 7



FIG 8

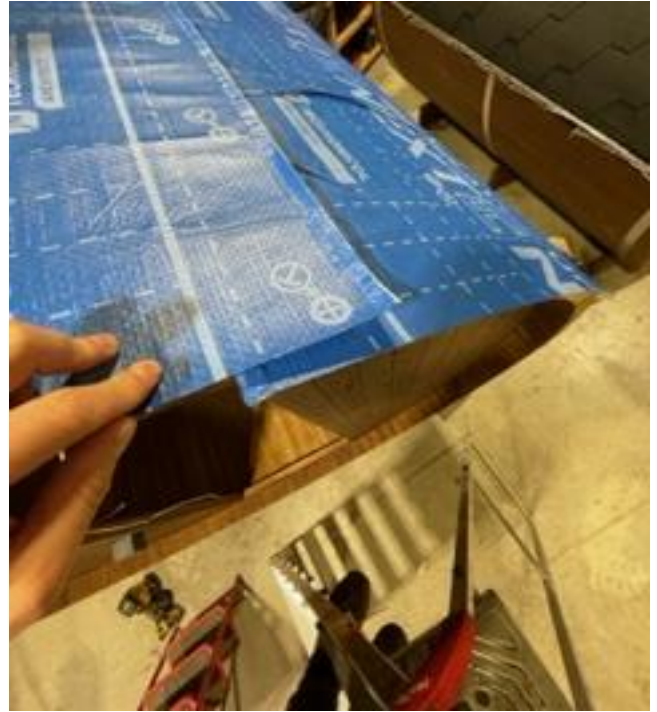


When installing underlay make sure it overlaps each time you use new sheet (refer to FIG 7 and 9).

FIG 9



FIG 10



When installing underlay make sure it overlaps each time you use new sheet (refer to fig.7 and 9).

FIG 11



You can also use stapler to hold underlay in place simply by stapling in a few places (refer to fig.8 and 11).

FIG 12



FIG 13



Installing shingles: firstly use the rectangular shape shingle, remove white adhesive cover and stick it to the sauna (refer to FIG 12). Then using nail gun or hammer, nail the first shingle sheet to the sauna (refer to the FIG 13, 14, 15).

FIG 14



FIG 15



Using nail gun or hammer, nail the first shingle sheet to the sauna (refer to the FIG 13, 14, 15).

FIG 16



FIG 17



Next step is to measure the distance left from end of the sauna (refer to the FIG 16).
Then cut it to the size (refer to FIG 17).

FIG 18



FIG 19



Once first level of shingle is installed (refer to FIG 18). When starting new level of shingles,
you have to apply sheet making sure it is exactly where the previous attach line was (refer to FIG 19)

FIG 20

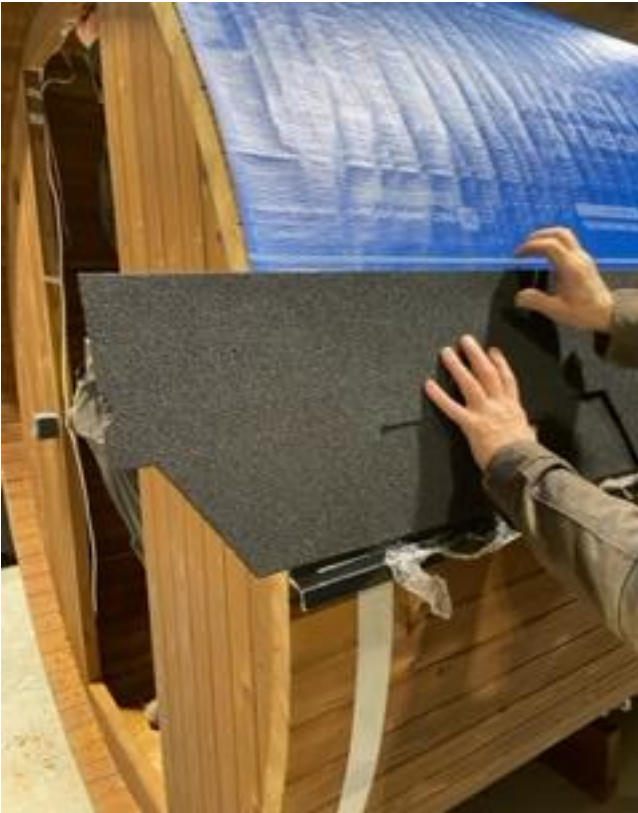


FIG 21

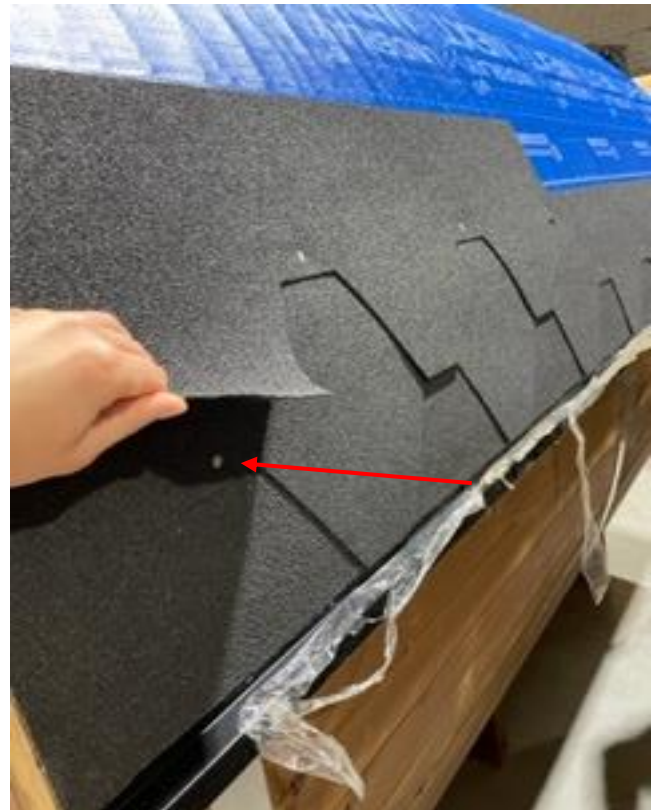


In FIG 20 you can see that when starting new level it most likely start where the edge of sauna is. When starting new level of shingles, you have to apply sheet making sure it is exactly where the previous attach line was, this is also where you create pattern (refer to FIG 19). Each next sheet has a cuts for better applying (see FIG 21), this helps to connect each of shingles sheets.

FIG 22



FIG 23



Once each layer is nailed, each next goes on top of previous one and covers nails, (see FIG 23).

FIG 24



FIG 25



All the overlaps of the shingles at each end of the sauna you can cut either when nailed or before you instal it on the sauna (refer to FIG 25, 26).

FIG 26



FIG 27



FIG 28



Applying last sheets of shingles on very top of sauna roof. Use again rectangular shape sheet of shingles, same you use in very first line of shingles (refer to FIG 27). Flip that sheet over and cut in smaller squares (refer to FIG 28).

FIG 29



FIG 30



FIG 31



Once cut, on the roof you will have to lay in down as per FIG 29. Each square will overlap previous one approx. by 15 cm (refer to FIG 30, 31)

FIG 32



FIG 33



Then again using nail gun or hammer, nail each square one by one to the roof (refer to FIG 32, 33).

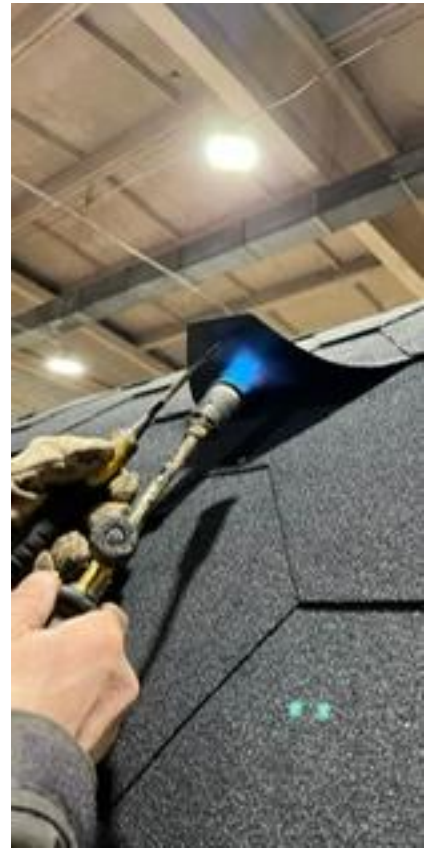
FIG 34



FIG 35



FIG 36

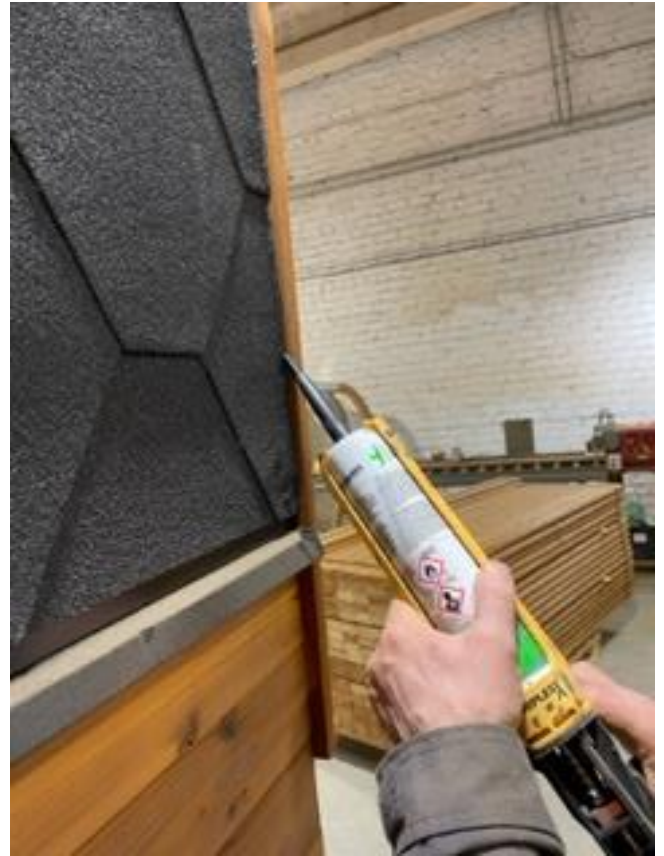


Once all squares are laid and nailed (refer to FIG 34). Using gas heater, you must heat each sheet and then glue it to the roof (refer to FIG 35, 36). This procedure you must do for every single layer, because with nails you just secure sheets, but with heater you melt them together, this will protect your sauna roof for any water getting into it.

FIG 37



FIG 38



Last step you must do is to apply sealant on the edge of the sauna (refer to FIG 37). Place decorative boards and screw them, then apply sealant on the edge (refer to FIG 38).